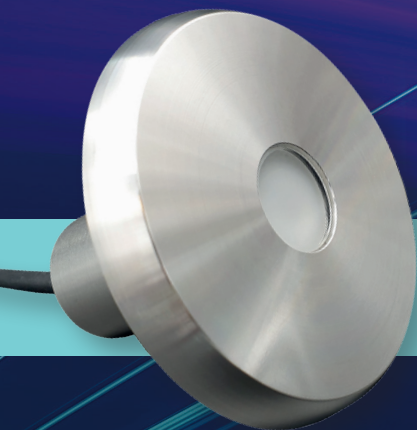


# Certikin PU2 Mini LED Light

## NEW

### LINER VERSION IS NOW AVAILABLE

Liner version to be used with standard Certikin liner inlets



The highly efficient PU2 Mini Push-Fit LED light available in both RGBW and white is easy to install, has a high output and the neatest of finishes.

The RGBW version is controllable via a smart phone using the free app, giving complete control over colour, sequences and brightness.

**For concrete pools**, the full 316 grade stainless steel body fits directly into a standard 1.5 inch pipe, leaving just the 2mm thick stainless steel fascia on display in the pool.

**For liner applications** the light screws into a standard Certikin inlet fitting leaving an attractive, clean finish.

- Multiple lights can be synchronised or controlled independently
- One power supply and Wi-Fi controller will operate up to 26 lights
- Controlled using a free app available on iOS and Android
- App provides full control of colours and sequences via the customer's smartphone
- Versatile for different applications including pools, spas, step areas and features
- Two year warranty



Concrete version to be used with standard 1.5" class C pipe

