

1. RECOMMENDATION

LED PROJECTORS 12V ~

-Manufactured in ABS - optical medium that can be easily dismantled. Qualified people are needed to install this projector.

To only be used in the event of water immersion.

IMPORTANT: this manual contains information of prime importance regarding safety measures to adopt when installing and commissioning. It is consequently essential that the installer and the user read these instructions carefully before starting to assemble and start up.

IMPORTANT SAFETY NOTICE: Electrical installations for swimming pools must comply with requirements of standard NF C 15-100 and regulations in force (domestic power grid).

NOTE : If the SPOTLIGHT bulb's power is supplied by an electronic transformer there is a risk it may not work (contact your retailer for details).

Works only with a safety transformer (toroidal transformer) Class III 230V / 12V ~.

Provide a power supply 10% higher than the power absorbed by the spotlight.

A 100 V.A. transformer can power 2 projectors (12 color LEDs) : $2 \times 45 = 90 \text{ VA}$

Standard	6 Leds White	26 W	12 Leds White	42 W	12 Leds Color	36 W
	Cable section	Distance Max Box/ Projector	Cable section	Distance Max Box / Projector	Cable section	Distance Max Box/ Projector
	2 x 1,5 mm ²	11 ml	2 x 1,5 mm ²	7 ml	2 x 1,5 mm ²	8 ml
	2 x 2,5 mm ²	19 ml	2 x 2,5 mm ²	11 ml	2 x 2,5 mm ²	13 ml
	2 x 4 mm ²	29 ml	2 x 4 mm ²	18 ml	2 x 4 mm ²	21 ml
	2 x 6 mm ²	44 ml	2 x 6 mm ²	27 ml	2 x 6 mm ²	31 ml
	2 x 10 mm ²	72 ml	2 x 10 mm ²	45 ml	2 x 10 mm ²	52 ml

See the table below to identify the section of cable depending on the length and power. For low currents and short son, please be very superfluous. Remember that falls can be very high on bad connections, lugs and son Loose oxidized.

If the external flexible cable or cord of this luminaire is damaged, it must only be replaced by the manufacturer, its service agent or similarly qualified person, in order to avoid all risks. Insert the cable in the grommet at the recess's bottom and leave a sufficient length to be able to pose the spotlight on the pool edge, since the grommet is tightened, the only thing to do now is to insert the spotlight in its recess. For optimum light in your pool, always keep the bulb as below:



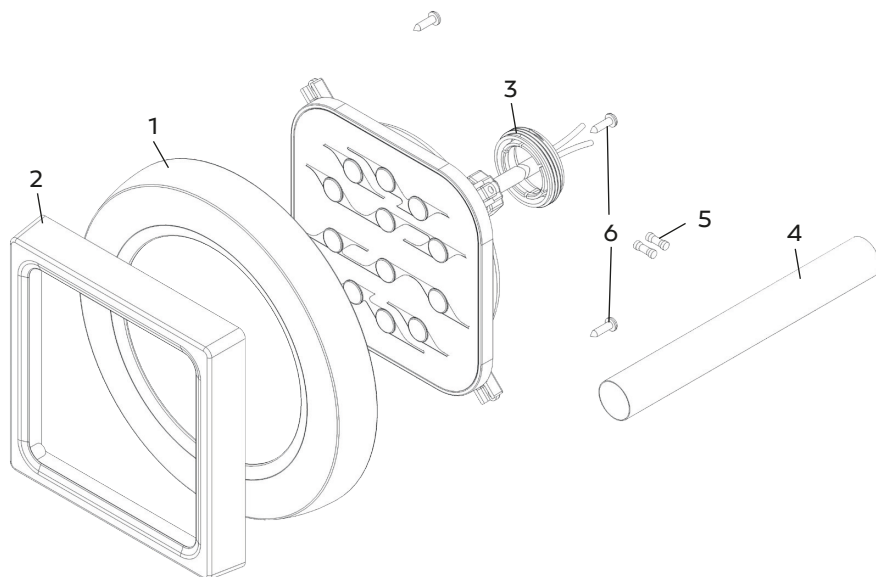
COLOR LEDS FOR HEADLAMPS

10 colours/5 continual colour sequences.

- Change colours or sequences (standard) by turning off the power button "ON/OFF".
- Optional: colour or sequence changes using the Monitor-Modulator Receptor KIT with wireless remote control.
- Remember the bulb colour or pre-defined sequence after switching off the power.

2. CONTENTS

/	BULB WITH 2.5 m CABLE	64194LB15 64194LB30 64194LC15
1	ROUND COVER	64209
2	SQUARE COVER	64210
3	SNAP-IN RING	64267
4	HEATSHRINK SLEEVING	500458
5	BLUE CONNECTION END PIECE (x2)	64335
6	BAG OF SCREWS(8 SCREWS)	8x 65100



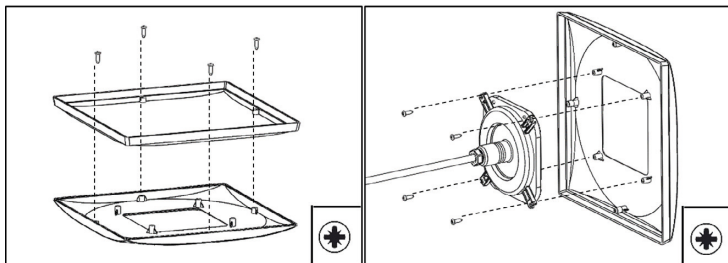
3. INSTRUCTIONS

Sealing piece with 1.5" thread (BSP) installed in the basin.

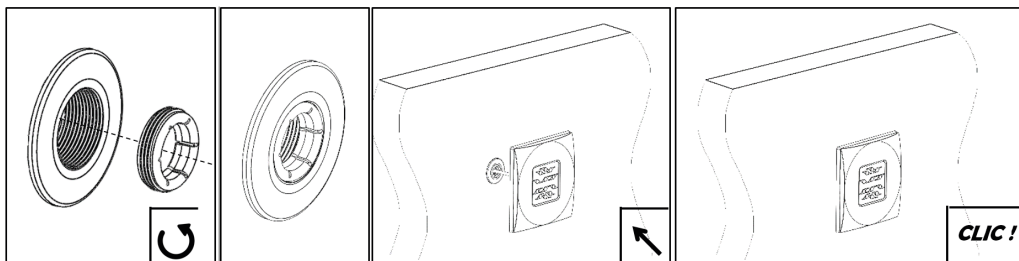
Connection box connected via watertight PVC pipes within 2 m of the sealing piece.

Power cable in the connection box.

Preparation of the hubcap in the choice ROUND OR SQUARE :

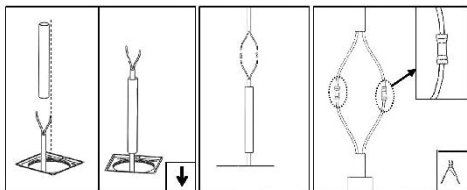


Installing in the pool:



Electrical connection :

1. Verify that the sleeve lugs and the resin-coated, heat-retractable sheath are in place.
2. Insert the resin-coated, heat-retractable sheath into one of the two cables, and then connect the two cables together using the sleeve lugs, which must be mounted on either side by means of an appropriate clamp.



3. Do an electrical test before gluing the sheath.

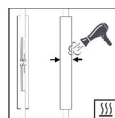
4. Faire coulisser la gaine et la positionner de manière à avoir la cosse manchon au milieu et une même longueur de gaine sur chacun des 2 câbles.

5. Slide the sheath into position, so the sleeve lug is in the middle and there is the same length of sheath over both cables.

Heat the sheath with a heat gun, moving from the center

of the sheath outward, to prevent the formation of any air pockets in the middle.

TO AVOID BURNING THE SHEATH, DO NOT HOLD THE HEAT GUN TOO CLOSE TO IT.



5. You will be done once the entire length of the sheath has retracted. You will see a little resin seeping out at both ends.

The purpose of this sealing process is to prevent the infiltration of water into the projectors via the copper strands in the cables. If our after-sales service observes any such infiltration, this will void the warranty on those projectors. "



THE CONNECTION MUST ALWAYS BE ABOVE THE WATER.