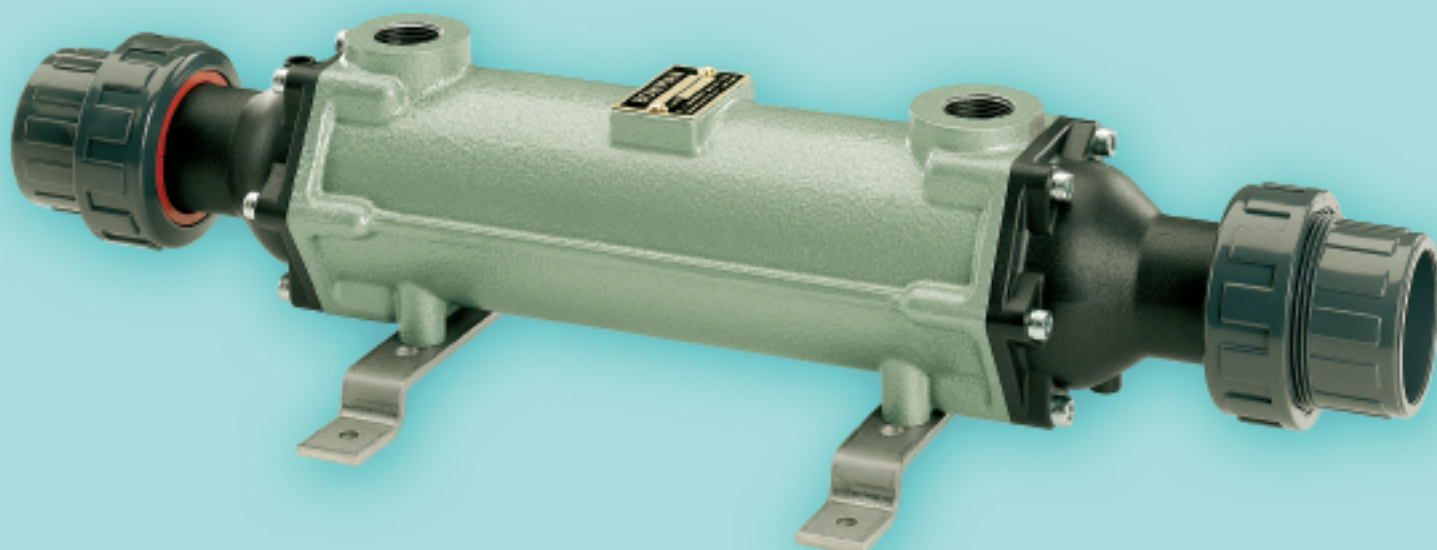
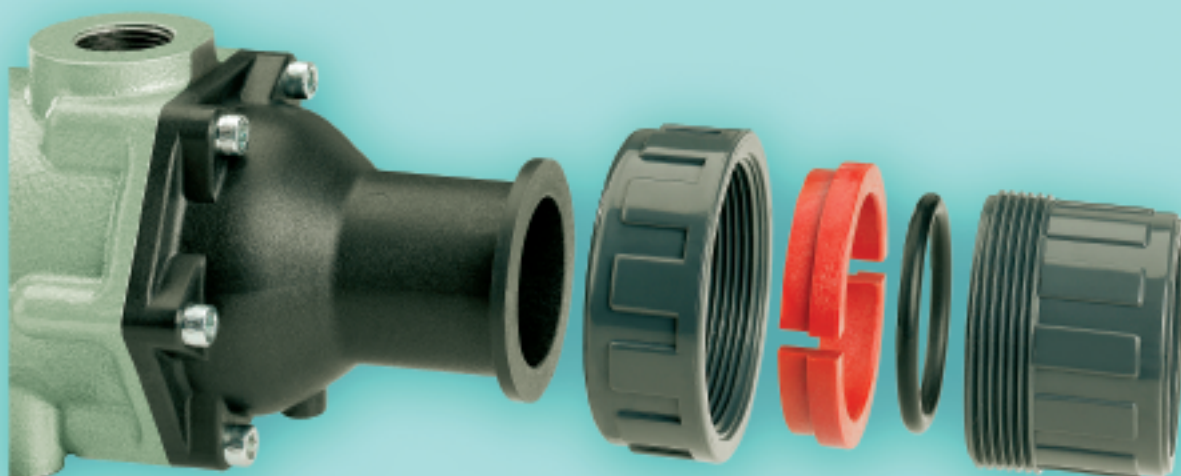


**“E.J. Bowman are pleased to announce
a new addition to their existing
Swimming Pool Heat Exchanger Range”**



The new Heat Exchanger incorporates an integrated end cover which accommodates a solvent weld connection direct to the pool water flow pipework.

European & British Standard fittings are available with an integrated thermostat pocket provided as standard.



**For more information and a closer
look at the Heat Exchanger
visit us at :**

**SPATEX 2008 - Stand U110
3 - 5 February 2008**

BOWMAN®

www.ejbowman.co.uk

Tel: +44(0)121 359 5401 Fax: +44(0)121 359 7495
E.J. Bowman (Birmingham) Ltd.
Chester Street,
Birmingham, B6 4AP
E-mail: info@ejbowman.co.uk



BSI
Reg. No. FM38224

Swimming Pool Heat Exchangers for use with boilers

The table below enables the selection of the appropriate heat exchanger and shows the output that can be achieved from our units with different pool and boiler flow rates and different sizes of pools. The performance capabilities of the heat exchanger are based on an 8 hour cycle of the swimming pool water through the heat exchanger, a pool water temperature of 30°C and a boiler water inlet temperature of 82°C.

| Type | Pool capacity | | Boiler water flow | | and Head loss | | Pool water flow | | and Head loss | | Heat transfer | | |
|----------------|----------------|---------|-------------------|-------|---------------|--------------------|-------------------|--------|---------------|-------------------|---------------|-----|-----------|
| | m ³ | gal | m ³ /h | gal/h | kPa | lb/in ² | m ³ /h | gal/h | kPa | b/in ² | kcal/h | KW | BTU/h |
| 4111-2 | 15 | 3 000 | 0.42 | 92 | 5 | 0.75 | 1.72 | 380 | 1 | 0.14 | 7 750 | 9 | 30 000 |
| 4111-2 | 25 | 5 000 | 0.72 | 158 | 14 | 2.00 | 2.90 | 632 | 2 | 0.29 | 13 000 | 15 | 50 000 |
| 3705-3/4495-3* | 25 | 5 000 | 0.72 | 156 | 1 | 0.15 | 2.90 | 625 | 1 | 0.15 | 13 000 | 15 | 50 000 |
| 3705-3/4495-3* | 45 | 10 000 | 1.44 | 312 | 3 | 0.45 | 5.64 | 1 250 | 2 | 0.30 | 25 000 | 30 | 100 000 |
| 3705-3/4495-3* | 70 | 15 000 | 2.16 | 468 | 7 | 1.04 | 8.52 | 1 875 | 5 | 0.75 | 38 000 | 45 | 150 000 |
| 3705-3/4495-3* | 90 | 20 000 | 2.88 | 625 | 13 | 1.95 | 11.40 | 2 500 | 8 | 1.12 | 50 800 | 60 | 200 000 |
| 3706-2/4496-2* | 115 | 25 000 | 3.60 | 782 | 2 | 0.30 | 14.16 | 3 125 | 5 | 0.75 | 62 800 | 75 | 250 000 |
| 3706-2/4496-2* | 135 | 30 000 | 4.20 | 938 | 3 | 0.45 | 17.00 | 3 750 | 7 | 1.04 | 75 700 | 90 | 300 000 |
| 3707-2/4497-2* | 180 | 40 000 | 5.70 | 1 250 | 2 | 0.30 | 22.80 | 5 000 | 7 | 1.04 | 100 700 | 117 | 400 000 |
| 3707-2/4497-2* | 230 | 50 000 | 7.20 | 1 562 | 4 | 0.60 | 28.44 | 6 250 | 11 | 1.65 | 125 600 | 145 | 500 000 |
| 3708-2 | 320 | 70 000 | 9.90 | 2 188 | 4 | 0.60 | 39.60 | 8 750 | 8 | 1.12 | 176 400 | 205 | 700 000 |
| 3709-3 | 410 | 90 000 | 12.60 | 2 812 | 5 | 0.75 | 51.00 | 11 250 | 7 | 1.04 | 226 300 | 263 | 900 000 |
| 3709-3 | 500 | 110 000 | 15.60 | 3 438 | 7 | 1.04 | 62.40 | 13 750 | 10 | 1.50 | 279 600 | 325 | 1 100 000 |
| 3711-3 | 680 | 150 000 | 21.60 | 4 688 | 4 | 0.60 | 85.20 | 18 750 | 9 | 1.35 | 376 800 | 440 | 1 500 000 |
| 3711-3 | 910 | 200 000 | 28.50 | 6 250 | 7 | 1.04 | 114.00 | 25 000 | 15 | 2.25 | 503 300 | 585 | 2 000 000 |
| 3710-3 | 1 140 | 250 000 | 35.40 | 7 812 | 4 | 0.60 | 142.20 | 31 250 | 10 | 1.50 | 628 000 | 730 | 2 500 000 |

*These part numbers include a thermostat pocket end cover.

Maximum working pressure 6 bar.

Maximum working temperature 100°C.

Bowman in Depth

To find out more, please write, telephone or fax and ask for your copy of the technical leaflets shown below; we will send them to you by return of post or alternatively visit our web site: www.ejbowman.co.uk

