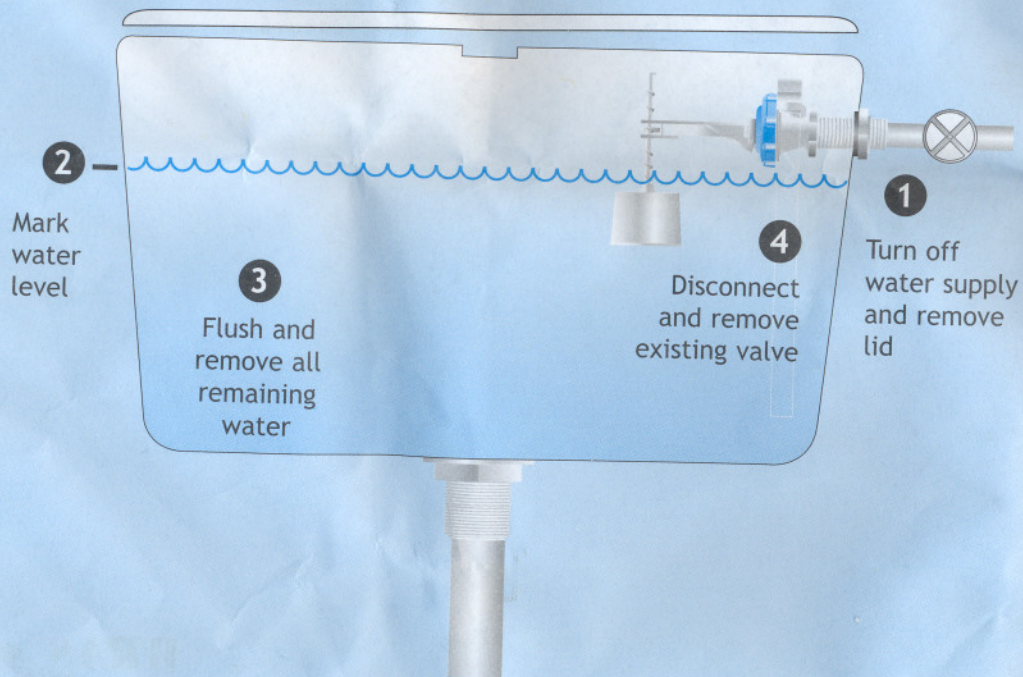


## STAGE 1

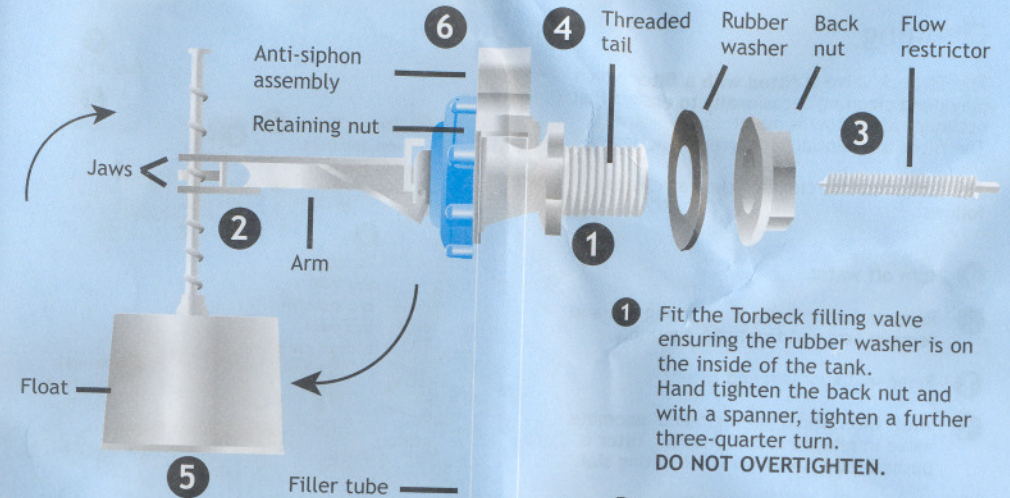
### Pre-installation

- 1 Turn off water supply to cistern and remove cistern lid.
- 2 While still full, mark the normal water level on the inside of the cistern.
- 3 Flush the cistern and remove all remaining water with a sponge or cloth. Ensure all dirt and loose particles are removed as they will impair the filling of the Torbeck valve.
- 4 Disconnect and remove existing filling valve.



## STAGE 2

### Fitting your Opella filling valve



- 1 Fit the Torbeck filling valve ensuring the rubber washer is on the inside of the tank. Hand tighten the back nut and with a spanner, tighten a further three-quarter turn. **DO NOT OVERTIGHTEN.**
- 2 Insert float spiral stem horizontally between the two lower jaws and twist to engage upper jaw.
- 3 Insert correct flow restrictor into threaded tail (See table overleaf for correct flow restrictor setting).
- 4 Check anti-siphon assembly is held securely by retaining nut and filler tube hangs freely.
- 5 Turn on the water supply. Allow the cistern or tank to fill. Adjust water level by twisting float up or down. **IMPORTANT FOR NEW BUILD/INSTALLATIONS:** Before turning water on, ensure that one cold water tap is open so that dirt and loose particles in the pipe work are flushed through the tap.
- 6 To rotate or remove. Unscrew retaining nut, pull anti-siphon vertically and rotate or replace anti-siphon assembly. Tighten up retaining nut and ensure raised lip is retained.

## STAGE 3

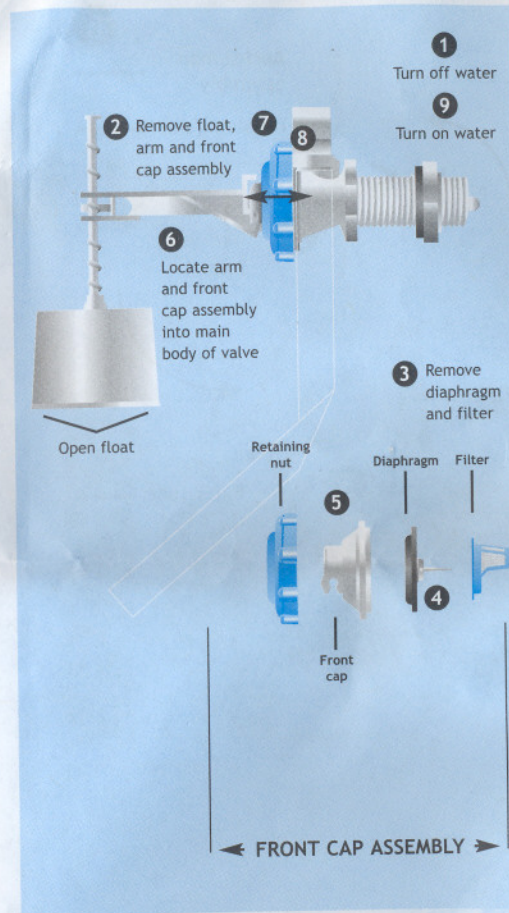
### Maintenance and cleaning of filling valve

#### Cleaning

The Torbeck valve is fitted with a filter which may need cleaning occasionally to ensure that optimum waterflow is maintained. The filter is essential for correct functioning.

The procedure for cleaning the valve is as follows:

- 1 Turn off water.
- 2 Remove float, unscrew retaining nut and remove arm and front cap assembly.
- 3 Remove diaphragm and filter.
- 4 Wash filter and diaphragm and assemble valve in reverse order, ensuring filter is pushed fully back over it's locating slot.
- 5 Position coloured bush in diaphragm over stainless steel pin in main body of valve.
- 6 Locate arm and front cap assembly into main body using the slot and peg provided.
- 7 Slide retaining nut over arm and front cap assembly and tighten.
- 8 Ensure arm is clipped fully into front cap.
- 9 Turn on water supply.



#### Restrictors and water pressures

##### 3/8" Brass

Below 1 bar (14 p.s.i)  
Over 1 bar (14 p.s.i)

No Restrictor  
Fit Flow Restrictor

##### 1/2" Plastic

Below 1 bar (14 p.s.i)  
From 1-4 bar (14 - 60 p.s.i)  
Over 4 bar (60 p.s.i)

No Restrictor  
L.P. Restrictor  
H.P. Restrictor

\* Please ensure the correct water pressure is maintained using restrictors in relation to the table above. Note, it is essential that the overflow rate must be greater than the infill rate when the valve is fully open.

**Warning:** Solder flux and some sealing compounds can damage this plastic plumbing product.

#### Opella Limited

Twyford Road, Rotherwas Industrial Estate, HEREFORD HR2 6JR, England.

t: +44 (0) 1432 357331 f: +44 (0) 1432 264014 w: www.opella.co.uk e: sales@opella.co.uk

## features • fitting instructions

# Torbeck®

### Side entry filling valve

- Low noise for quiet and efficient fill
- Reduces water hammer
- Neat and compact

WRAS  
APPROVED  
PRODUCT

Opella  
plumbing innovations

LF00109