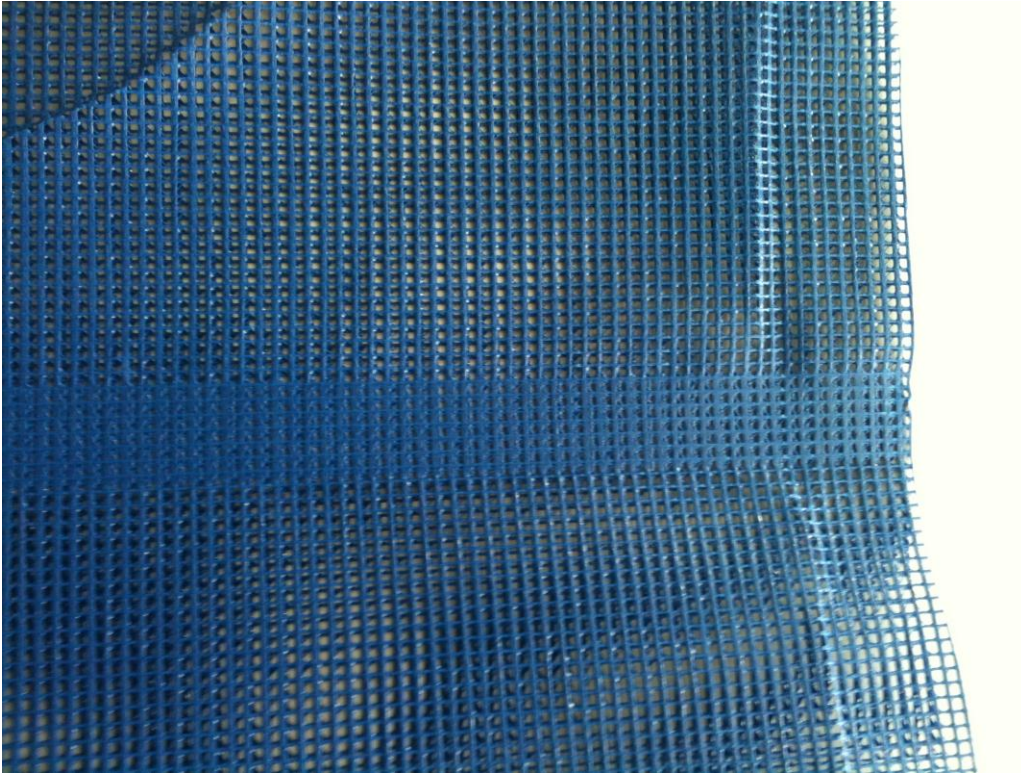


# DIY Tow Kit Instructions

---

## Attaching the straps

1. Locate welded seam on netting.



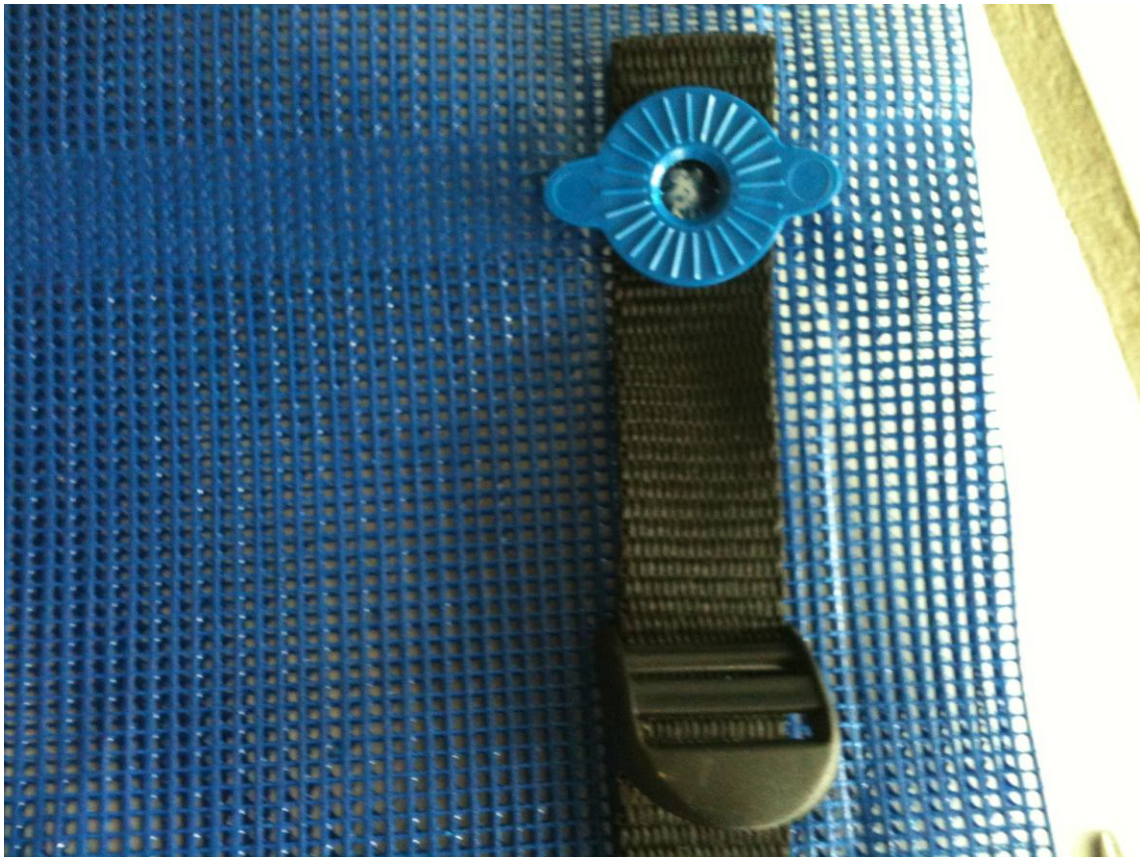
2. Push the two spikes of the middle part of a Smart Lock Connector through the welded seam.



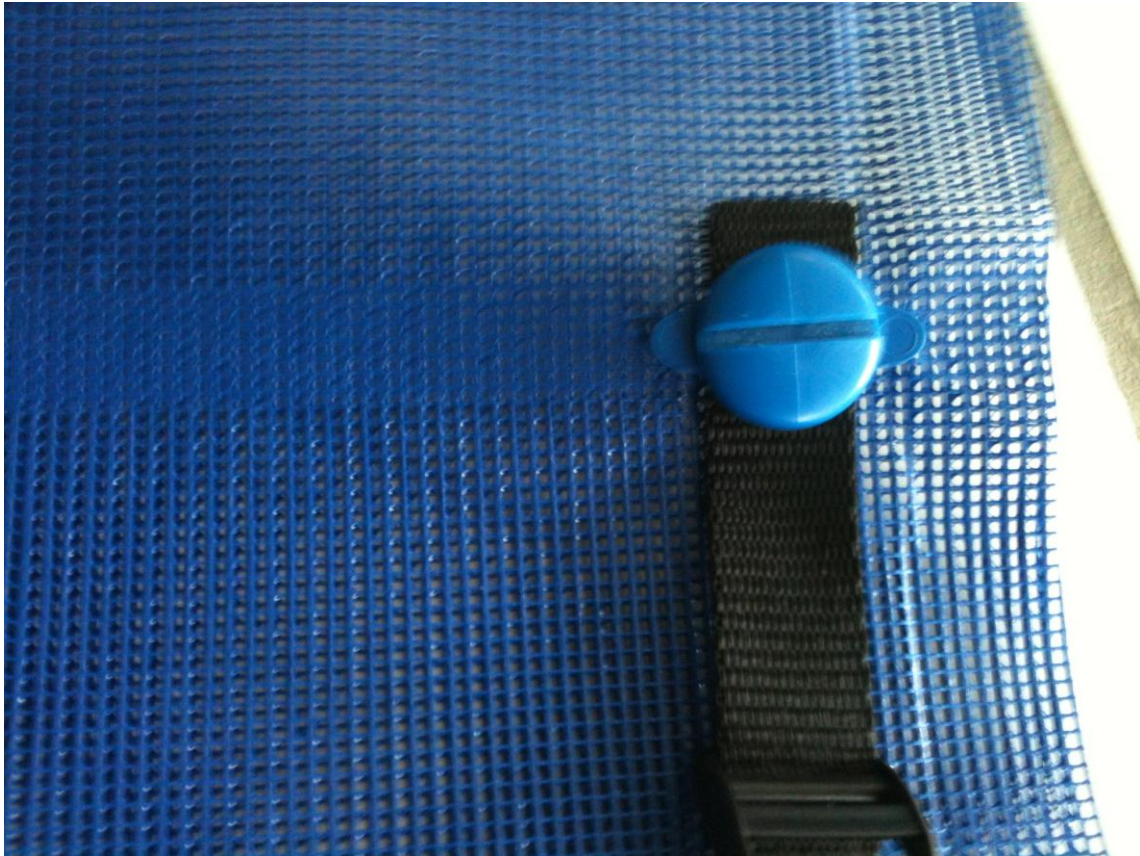
- Using a Braddle, make a hole in the netting, through the centre of the Smart Lock



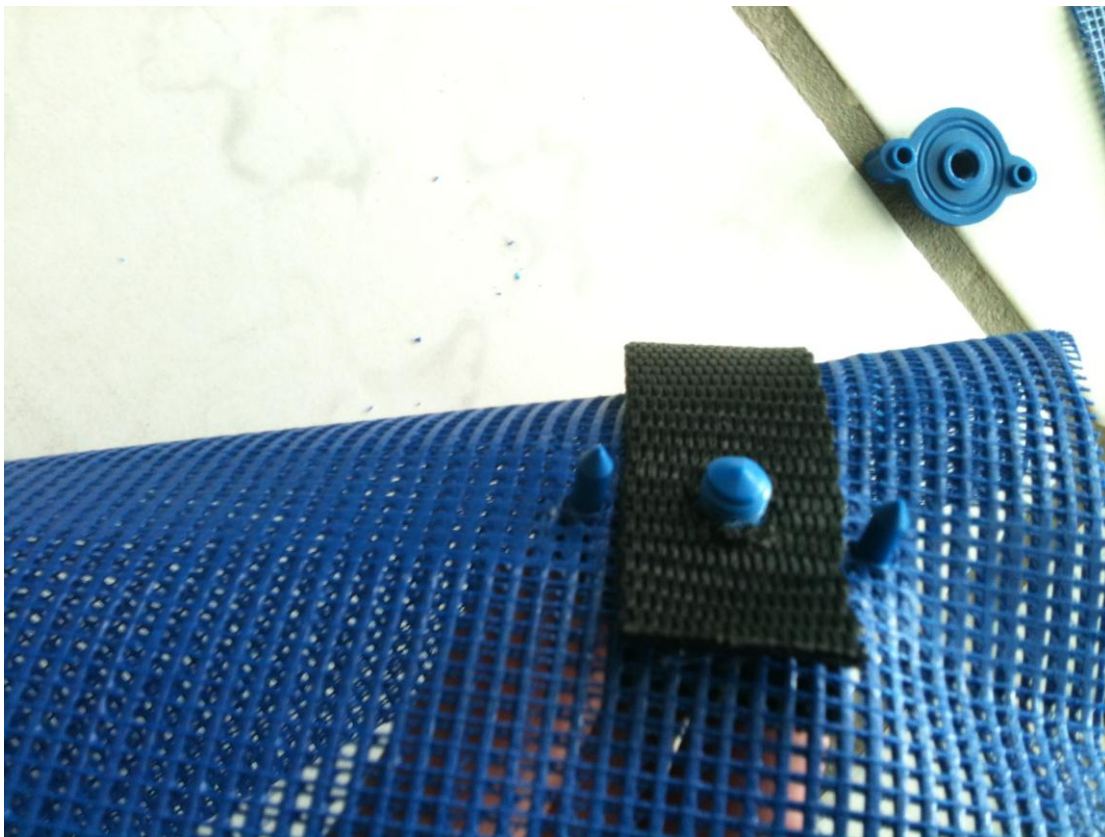
- Push one end of the Short strap under the fixing, aligning the holes.



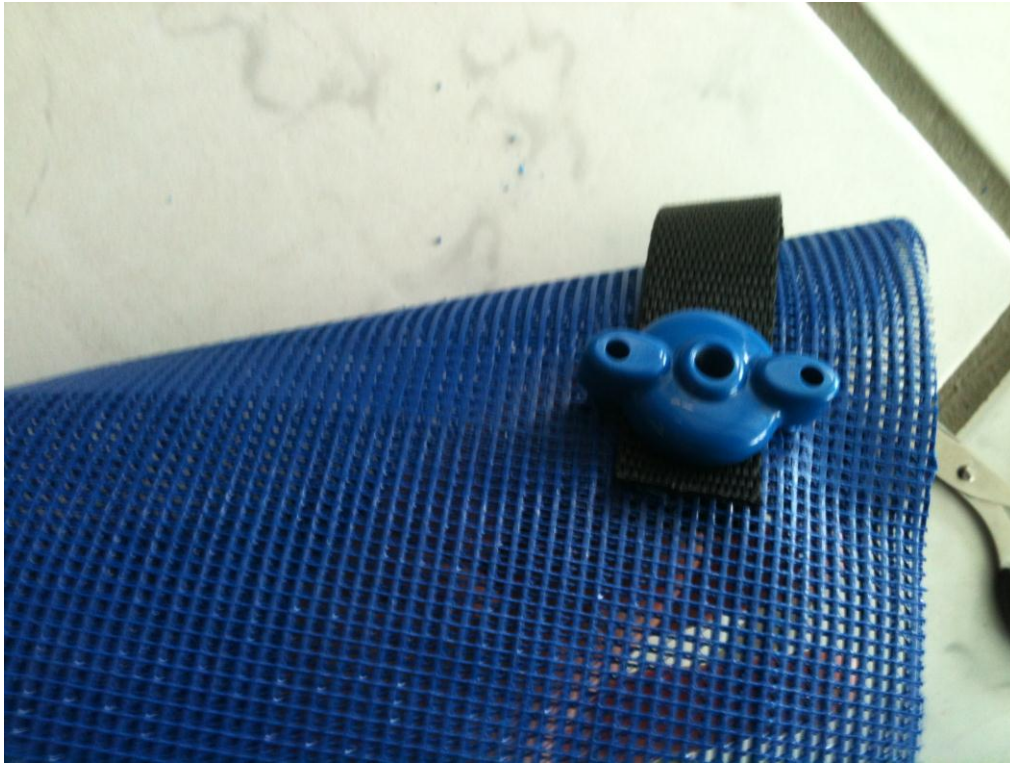
5. Push the Screw top of the Smart Lock through the centre.



6. From the underside, pass the other end of the short strap around the front edge of the netting, making sure the buckle is in place first, then locate onto centre of screw



7. Locate remaining part of Smart Lock onto the two spikes



8. Then tighten screw, to clamp together



9. Insert Noodles trimming as required

10. Starting with straps at far ends, push strap up through middle slot of buckle, then back down the other slot



11. When all the straps are attached, adjust so tension is evenly distributed across all 5 straps.

